

EUREKA EXPRESS

VOL XXXII No. 1 CIRC 286

FEBRUARY 2011

EUREKA COUNTRY FAIR and Giant Pumpkin Weigh In Day

Saturday 26th March 2011

At Eureka Hall

11:30 – 3:00pm

Food, plants, produce and crafts



Bring the family and enjoy all the fun of the Fair with country style competitions for children and adults

Childrens 'Make a Scarecrow' and 'Flower Show' Competitions
Flower Show to include sand saucers, vegetable animals and aqua jars

See inside for details

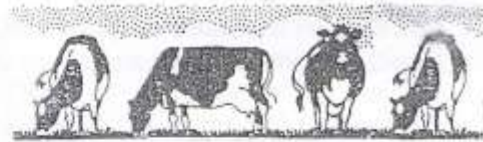
To allow for judging to take place please have pumpkins, scarecrows and flower show entries at the Hall between 8:30am and 11:00am

To register your interest in helping on the day, or having a stall, please contact
Gayle Orr 824 1713 or Jill McGuire 824 3696

**Stalls free to local people and Eureka
Express advertisers.
\$5:00 for others
Bring your own table**



Guest Editorial for the Eureka Express



Little did we know when we started dairy farming 8 years ago, our first house would be in the district we would come to call home. It was just up the road from where we would be married, where our children would grow up, where they would start school, where we would make lifelong friends.

We started milking cows for Steve and Frances Wilson on Victoria Road. I would drive past Tauwhare School everyday on my way to work in town, not knowing Emma would be starting school there a few years later. After finishing our first season farming, we moved to Ohaupo with both of us working full time on the farm.

We returned to Eureka a year later with the news we were no longer going to be a couple but were to become a family of 3. We started the first of 3 years working for Brian and Judith Willis on Tauwhare Road. We welcomed Emma to the family and right from the start she was our little farm girl. Having spent so much time on the farm bike rearing calves while pregnant, if ever we had trouble settling baby Emma, Dad would take her for a quick ride on the quad, returning home with a peacefully sleeping baby.

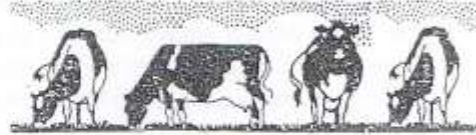
After a year farming in Te Awamutu, we returned again to Brian and Judith's farm. The next 2 years we would start to really feel Eureka was our home. We made awesome friends with our neighbours, Graham and Stephanie Timms, and the track between the two houses was well worn after many dinners, beers, bottles of wine and rugby games shared together. In 2007 we married in Brian and Judith's garden, which we are still eternally grateful to them for, and keeping it local our wedding reception was held in the Eureka hall. At the end of the year we welcomed Ben to our family, and despite moving away and coming back again, both our children were brought home after they were born to the same house.

Our next move was 4 minutes up the road to work for Graham and Stephanie on Geoff and Dianne Hinton's farm on Eureka Road. We spent the next 2 years here cementing ourselves in the local community. Steve being a member of the local discussion group knew all the local farmers in the area. I, with 2 children and an ingrained ability to talk made friends with many local mums. Thanks to Geoff and Dianne for the many yummy meals and memorable nights, especially to Dianne for delivering Steve home safely after Geoff 'got hold of him', many of you will know what we mean...

2010 found us again looking for our next step up the career ladder, and in looking outside the area at farms we realised how much we loved living here and did not want to leave. We were very excited and humbled to move 2 minutes around the corner to Bucklin Farms. Kevin and Lyn, and Scott and Jo are the most awesome and supportive bosses and friends. The Bucklin staff get together regularly, with the boys and Jodi going to BoxFit twice weekly, and us ladies 'shakin it' to Zumba. Not to mention the legendary Friday night meetings!!

This editorial is to thank everyone who has helped us in the past few years to make Eureka our home. Despite moving away and coming back, twice, we really do feel very lucky to be living here. So thank you to our friends, neighbours, to everyone who gives us a friendly wave, and to our farm bosses, past and present, for helping us get to where we are today, and for making this community home.

Steve, Kim, Emma and Ben Taylor



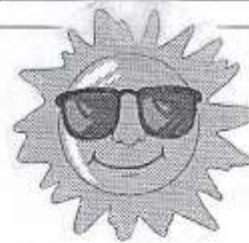
RAINFALL

	December 2010	Year to 31 st December
Total (mm)	93	1228
Average (1994-2010)	103	1174
Difference	-10	+54

Rainfall recorded on 9 days.

	January 2010
Total (mm)	213
Average (1994-2011)	89
Difference	+124

Rainfall recorded on 11 days.



MARKET PLACE

WANTED

Firewood – please phone Andrew on 824 1963 if you have any trees suitable for firewood that are on the ground.

BABY SITTER

Do you want a night out to yourself without worrying about the kids?

I am an experienced baby sitter. I love kids and enjoy looking after them.

Please call 824-1016 – Grace Lelieveld

AVAILABLE NOW

Spray free, outdoor tomatoes, gherkins and eggplants. Bulk amounts available. Reasonable prices.

Phone ring Roachs to order or leave a message

- ph 824 1725 or 021 955 183

DUAL CLEANERS AVAILABLE

Weekly or spring cleaning

Covering the local area

Call to discuss your cleaning requirements

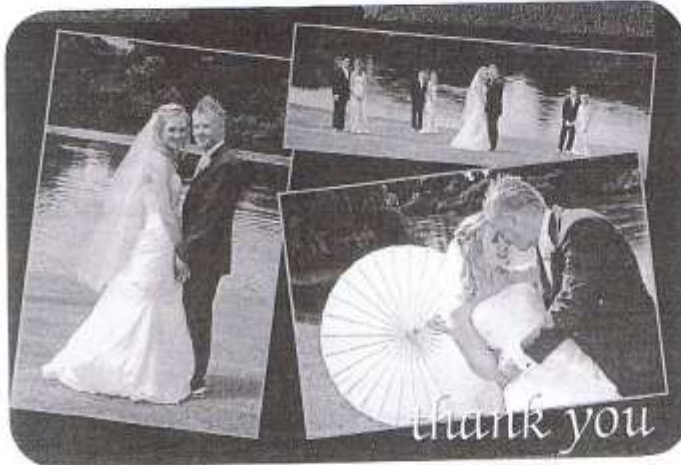
Ph Jackie 824 1607



SNIPPETS



WEDDING CONGRATULATIONS to **Dianne Wisse**, daughter of Andre and Hilly Wisse of SH26, who married **Caleb Grul** of Hamilton on December 4th at Hukanui Reformed Church. Very best wishes to you both for the future.



Dianne, daughter of Andre & Hilly Wisse married Caleb Grul from Hamilton.

4th December 2010,
Hukanui Reformed Church

WELCOME TO EUREKA TO Noel Eiesmere who is now in residence on Friedlander Road, right next door to his family of Alistair, Sarah and grandchildren Noah and Bianca. Noel has moved out from Hamilton and is semi retired. Ph.

-And a warm welcome also to two couples **Brett and Sarah Gainfort** and **Kerry and Hayley Lester** who are now living on the Timms' property on Tauwhare Road.

We trust you will all enjoy your time in Eureka.

EXAM CONGRATULATIONS. Well done to all secondary students who achieved good results in their NCEA exams and all the best to the school leavers as they tackle further education or begin their first jobs.

- **Chloe Walling** is heading off to Massey University to study for a Food Technology and Engineering Degree.
- **David Drever** will be studying IT at Waikato University

MISSING - a large powder Fire Extinguisher is missing from the Hall. It would be appreciated if it was returned - no questions asked!

EUREKA EXPRESS

ADVERTISING RATES		CONTACTS - Gall or Gayle	
Classified Advertisements	Free	Gall Mayall (Editor)	Gayle Orr (Treasurer)
Small Business Advertisements	\$10 / month	70 Eureka Road	1139 SH26
• x 10 insertions	\$80 / year	Ph 8241 788	R D 6, HAMILTON 3286
One Third Page Advertisement	\$15 / month	Fax 8241 028	Ph 8241 713
• x 10 insertions	\$120 / year	e-mail:	Fax -
One Half Page Advertisement	\$20 / month	editor@eurekaexpress.co.nz	e-mail: eorr@xtra.co.nz
• x 10 insertions	\$160 / year	gallandbarry@slingshot.co.nz	

WELCOME TO EUREKA to two overseas students whom we hope are enjoying their time in our community.

- 16 year old **Julian Morbelli** is an AFS student from Argentina who is spending a year with the Goulding family and 26 year old **Juan** from Chile has spent the last six weeks at Waikato University's Language Institute fine tuning his English speaking skills and living on Manor Park with the Rudolf-Hendersons.

My name is Julian Morbelli and I am 16 years old. I am living in Eureka with the Gouldings. I will stay in New Zealand for one year on an AFS school exchange. I'm from Buenos Aires in Argentina, specifically Ciudad Autonoma de Buenos Aires. In the capital there are about 13 million inhabitants. I am going to Hamilton Boys High School. In general, I enjoy New Zealand very much, specifically the landscape and the lifestyle. I was surprised that the people wear bare feet in the house and in other places. I also find it different to eat early and that sport is very important at school. Also I like the fact that the people in NZ eat a lot of fruit. I have already learnt the haka, but I find pronouncing the words very difficult. I want to learn English because it's important in Argentina for obtaining a good job. I also want to get to know the culture and visit many places. Before I came I wanted to live in a peaceful place with green grass and lots of space, therefore living in Eureka is perfect for me.

Mi nombre es Julián Morbelli y tengo 16 años. Vivo en Hamilton en la casa de los Goulding. Yo estaré en Nueva Zelanda por un año porque estoy de intercambio. Yo soy de Argentina en Buenos Aires, más exactamente en la ciudad autónoma de Buenos Aires. En este lugar viven 13 millones de personas aproximadamente. Yo estoy asistiendo a Hamilton Boys High School. En general disfruto mucho Nueva Zelanda. Específicamente el paisaje y la manera de vivir. Me sorprendí mucho que no se usan zapatillas en las casas y en otros lugares. Encuentro diferente que la gente cena más temprano y que el deporte tiene mucha importancia en los colegios. También me gusta el hecho de que se come mucha fruta aquí. Ya he aprendido el haka pero pronunciar las palabras me cuesta mucho. Quiero aprender inglés porque es muy importante en Argentina para obtener un buen trabajo. También quiero conocer la cultura y visitar muchos lugares. Antes de venir quería vivir en un lugar tranquilo con mucho pasto y espacio, así que viviendo en Eureka estoy muy contento.



EUREKA BADMINTON CLUB



JUNIOR CLUB NEWS

Eureka Junior Badminton Club are holding their annual meeting on **Wednesday 9 March 2011, 7pm** at Matangi Hall. At the meeting we will review last years season and plan this years. We are looking forward to seeing parents at the meeting to help us plan another exciting season of badminton for our junior players. Bryce Silvester is still keen to be the Coordinator, thank you Bryce.

It is planned that badminton will start on Wednesday 6 April so put this date into your calendar and new members are welcome.

Any questions ring Trisha Bengé 8295531



EUREKA FAIR & GIANT PUMPKIN WEIGH IN

Saturday 26 March @ 11:30am at the Eureka Hall

- 1) Pumpkins – do bring all those pumpkins along. As giant pumpkins come in all shapes, colours and sizes there will be at least ten categories for prizes not just the biggest and the heaviest. For example:
 - 1st heaviest, 2nd heaviest, 3rd heaviest
 - Average weight
 - Best pair
 - Best colour (s)
 - Most unusual
 - Youngest gardener
 - Oldest gardener
 - Pumpkin closest to the judge's weight??
- 2) Scarecrow competition – one for all the family. Bring along your scarecrow(s) for judging
- 3) Flower show. For all the children
 - Sand saucers
 - Vegetable animals
 - Aqua jars
- 4) Colouring competition. This year the annual *Eureka Express* Colouring competition will be held in conjunction with the Fair. See picture enclosed with entry details on reverse.



NB: To allow for judging to take place on the 26th please bring pumpkins, scarecrows and flower show entries to the Hall between 8:30am and 11:00am

Other fun competitions to be held on the 26th include:

- Apple bobbing, coconut shy, horseshoe and gumboot throwing etc etc.

Do come along and enjoy all the fun of the Fair.

If you would like to help in any way or have a stall please phone Gayle Orr 824 1713 or Jill McGuire 824 3696.



TAUWHARE SCHOOL

ROLL GROWTH

Our roll continues to grow steadily. We have started the year with 128 children. The new classroom (Rm6) is due to be completed by the end of term 1. These children are currently being taught in the Multi-Purpose Room. Thank goodness we have this wonderful space to use!

Thank you once again to the Board of Trustees for supporting us in keeping the ratio of teaching staff to pupils as low as possible. It is obvious that while simply testing children nationally will not have a direct impact on a child's learning, we do know that by giving a child a chance to work closely with a teacher daily they will make more progress.

We currently employ 6 classroom teachers and 2 part time teachers and 3 teacher aides.

SCIENCE FOCUS

The whole school is studying Water –looking at robust environmental management practices to ensure our resources and our environment are protected and sustained. We are planning a trip to the Kariiro hydro-electric dam and the rowing centre to explore the residential, commercial and recreational uses of water. We also hope to add in kayaking or cruise the river to complete the day.

PROJECT ENERGISE

Ms McCambridge has organised for Michelle from Project Energise to come out and work with the children & teachers over the next few weeks. Michele will be taking sessions on Nutrition and on JUMP, RUN, THROW using the high jump, long jump and athletic equipment. Kylee has also organised for a swimming tutor to come and work with us all to enhance our swimming techniques. We have also had a facilitator from Swim Safe New Zealand working with teachers and children in the pool.

SWIMMING POOL GRANT

Thank you so much to WEL Energy Trust for their very generous donation of \$16 000 to go towards our new pool.

SCHOOL ENTITLEMENT AREA

The Ministry of Education requires us to put in a school zone. This will not affect children already enrolled in our school, but it will affect any students who live outside the entitlement area. This proposed area was decided at a meeting with the Ministry of Education and our Board Chairperson. We now have to send out the proposed zone to all schools in our area and to members of our community for consultation. Following the consultation process we will then send our recommendation to the Ministry of Education who have the final say where the boundaries will be.

Please have a look at the proposed entitlement zone and send any feedback/comments to me as soon as possible.

The 'home zone' boundary commences at the intersection of SH26 and Platt Road and travels along Platt Road, into Shaw Road to its end. From the end of Shaw Road take a direct line to the Pukemoremore Road/Victoria Road intersection. Travel east along Pukemoremore Road (includes Lang Road) to the intersection with Scotsmans Valley Road.

Turn right into Scotsmans Valley Road and travel through into Starky Road (includes Scotsvale Drive), and follow Starky Road to the intersection with Tahuroa Road. Turn left into Tahuroa Road and follow it through to the intersection with Tauwhare Road (includes Nicholls Road).

Turn right into Tauwhare Road and travel along to the intersection with Schollum Road. Turn left into Schollum Road and travel to its end. From the end of Schollum Road take a direct line to the Waverley Road/Piako Road intersection. Travel along Waverley Road into Holland Road and through to the Holland Road/Eureka Road intersection.

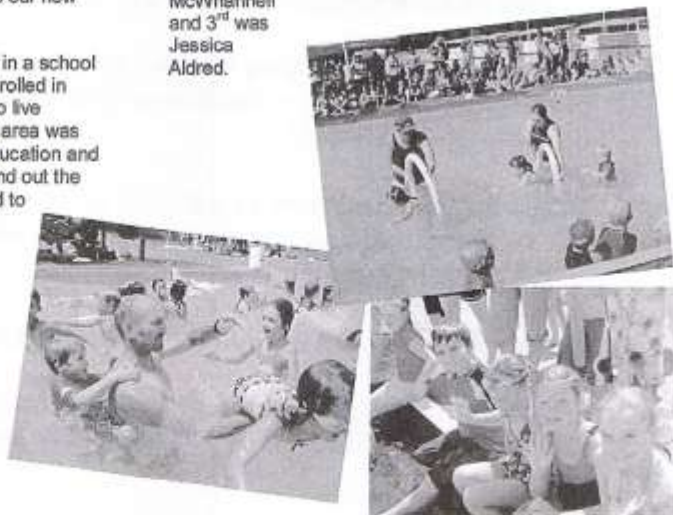
From the Holland Road/Eureka Road intersection take a direct line to the end of Hinton Road and travel along Hinton Road to the intersection with SH26. Turn right into SH26 and travel along SH26 back to where the zone boundary commenced at the intersection of SH26 and Platt Road.

(Both sides of all roads included unless otherwise stated)

SCHOOL PICNIC

I love this day!! We had such a great turnout of families again this year. This picnic is such a part of our country culture and is very relaxed, with mixing and mingling being the main aim of the day. The children really enjoyed their swimming races and had a great time playing together in the Morrinsville pools. We had 3 teams of parents competing against the children. To even things up a tad the parents had to swim with one hand holding their togs – hilarious!!! They still won by a nose.

Thank you so much to the parents for getting into the spirit of the day. The Year 5 & 6 children competed in the Smith Steelworks Cup. After a close race the winner was William Sinclair, 2nd was Jacob McWhannell and 3rd was Jessica Aldred.



Ambrose Golf Tournament

As a fundraising event for the Tauwhare School Pool, the PTA are organizing an Ambrose Golf Tournament to be held at the Walton Golf Club on **Sunday 3rd April**. This is the third Ambrose Golf Tournament held by the School with the previous days being a great success. We welcome anyone in the district, who would enjoy a social day of golf, to enter a team of four.

You do not need to be a skilled golfer to join in. **Registration closes on 7th March** so please contact the school to register – call in to the office or phone 824 0864. A limited number of teams can be entered so don't delay. If you are able to provide sponsorship or prizes for the day we would also love to hear from you.

Fundraiser for
our school pool
project

Sunday 3rd April
Walton Golf Club

Grab 4 mates and
register a team.

Cost \$100 per team
Fancy Dress or \$120 if
not dressed up.

Registration forms at
school office.

Phone 824 0864

Entries close 7th March

Tauwhare
School
Ambrose Golf
Tournament

Free food served during the day.

Drinks available on the bar-carts.

Book our dial-a-driver service.

Prize giving &
quick fire raffles
in clubrooms
afterwards.

Tauwhare School

100 Years and the Future
1914-2014



TAUWHARE INDOOR BOWLING CLUB

Bowls for 2011 commences with:

Opening Night – 3rd March at TAUWHARE HALL @ 7.30pm
- **Members a plate please**

New players are always welcome to join us on Thursday nights. If you would like more information please contact one of the following members:

- John Cottle (President) 824 0992
- Ivan Billings (Vice President) 824 1832
- Jim Bargh (Club Coach) 824 1100
- Rob Bargh (Secretary) 824 1819

Subscriptions:

- Members \$50.00
- New members \$30.00



Robin

McFarlane Contracting Hosts AG In Action

If you drove past McFarlane Contracting last week you might have wondered if the boys had been on a massive machinery buying spree. Cheryl is pleased to report that this is not the case. Colin and Cheryl's farm was the host site for New Zealand's Premier National Machinery Demonstration event, so all that impressive machinery was just on loan!

A demonstration event of this size was a first for New Zealand and was based on the highly successful Grasslands held in the UK. The event compares favourably with the Mystery Creek Field Days with the benefit of providing an opportunity to see a wide range of specialist machinery in action. Feedback from those who attended Ag In Action has been very positive, with the most frequent comment being that it is a better forum for contractors and farmers looking to buy new machinery.

Event organizer Andrew Reymer tells us the location was perfect with over 2,000 people attending the event, and the support from the McFarlane neighbours was outstanding. The quality of the buyers and the interest generated made it worthwhile for the wide range of machinery suppliers from all over the world. This is the future of machinery marketing.

Andrew credits a good deal of the success of the event to his Ag In Action partner Vaughan Coy, who designed and executed an excellent business plan. The wives of Andrew and Vaughan also played a major role behind the scenes.

By all reports, the concept is here to stay. Next time there will be a greater range of smaller machinery for local farmers, so watch this space!



Ladies a Plate



Passionfruit Dream

175g Butter, Softened	¾ cup brown sugar
1 ¾ cups self-raising Flour	250g cream cheese
¾ cup passionfruit pulp	2 eggs
1 tbsp milk	1tbsp lemon juice

Preheat oven to 170 degrees, Beat butter and sugar until light and fluffy, add flour and mix well Press two thirds of the mixture into the base of a 30x18cm slice pan. Bake for 10 mins, then remove and allow to cool. Beat cream cheese and passionfruit pulp and smooth. Add eggs and mix well, then mix in milk and lemon juice. Pour over the base and then crumble the remaining base mixture over the top. Bake for 35 to 40 minutes until set and the crumble topping is golden. Allow to cool before cutting into slices.

Strawberry Dream Cake

This is a spectacular summer dessert, surprisingly low in fat. You can make a gluten free version simply by leaving out the biscuit base. Try freezing it into individual moulds.

3 eggs whites'	¾ cup sugar
2 chips of strawberries	1 tspn vanilla essence

200g biscuit crumbs
75g butter, melted

Beat the egg whites, sugar vanilla and roughly chopped strawberries until the mixture quadrupled, approx 5 mins when you start beating stand by and use your hands to guard any strawberries that will jump out. Mix the melted butter and biscuit crumbs together. Press into 18cm spring-form cake. Then pour in the egg white mix. Freeze for at least 24 hours.

Sharon Laurent



NEWS FROM YOUR WAIKATO DISTRICT COUNCILLOR

The **Annual Plan** (budget) process for 2011 – 2012 began this week. We are reviewing planned expenditure endeavouring to keep any rate rise under 3%. I will let you know when the Draft Annual Plan is available on the website to view and when submissions close.

Two proposals in the Draft Annual Plan for consideration that I thought may be of interest are:

1. Funding part of the cost of the Great River Walkway / Cycleway between Ngaruawahia and Hamilton.
2. Introducing a partial user-pays system of \$25 per library card holder for WDC residents who currently use the Hamilton City & Cambridge libraries free of charge. For the last 15 years WDC has had a financial arrangement with the other two councils to allow our residents this free access. At the time this was considered a cheaper option than building a new library in the southern part of the District. I suggest that if you don't agree with this proposal you put in a submission so Council know how you feel about this change – remembering that the rest of the district has access to a free library service in Raglan, Ngaruawahia, Huntly and Tuakau and other smaller towns in the north of the district.

Waikato District Council is in the process of reviewing the district's Community Outcomes. During 2004 and 2005, the community took up the opportunity to have their say on their vision for the Waikato District. Their ideas were developed into nine visions for the whole district called community outcomes. These community outcomes have formed the basis of Council projects and decisions ever since.

Council is now reviewing the outcomes. Outcomes that are outside Council's role have been removed, in line with a change to the law, which amends the definition of community outcomes to the outcomes that Council aims to achieve. Previous outcomes that were repetitive have been combined. Some elements of Franklin District Council's outcomes have also been included to assist with the integration of the new part of the district.

Five revised community outcomes have been produced, and these are:

1. **Accessible Waikato** - relates to the community's access to infrastructure, transport and technology, and how it meets its needs.
2. **Sustainable Waikato** - which is about the effective management of growth and the protection and development of natural resources for future generations
3. **Thriving Waikato** relates to a district that prides itself on economic excellence, where heritage and culture are protected and celebrated.
4. **Healthy Waikato** is about a district with services and activities promoting a healthy community
5. **Safe Waikato** relates to people feeling safe and supported within their communities.

Public workshops to discuss the revised outcomes will be held (in association with Community Boards/Committees) throughout the district from January - March 2011.

The workshops will be informal and short, approximately 30 minutes long, and it is envisaged they will take the form of a short presentation by Council staff on the purpose of the meeting, followed by interactive exercises. The workshops will help to establish which outcomes are liked and which are not, which should be given priority, suggestions for new outcomes to replace those not liked, and ideas on ways to measure if the outcomes are being achieved.

The schedule of workshops for Eureka Ward are as follows:

Eureka Community & Tauwhare Community	Tauwhare Hall	7.00pm	1 March
Newstead Community & Matangi Community	Newstead Hall	7.00pm	16 March

Council will use the feedback and ideas to further develop the outcomes into a new set of district-wide community outcomes for adoption. There will also be a feedback form on Council's website www.waikatodistrict.govt.nz.

The adopted community outcomes will guide Council's decisions for the coming years, and form the basis of the Waikato District's Long Term Plan for 2012-2022.

I will be attending both these meetings – I hope you can join me and your Community Committee – Contact me if you have any queries.

Rob McGuire
Councillor Eureka Ward

Ph. 824 3696 / fax 824 3645 /
Mob. 0274 970 966 / email robmcguire@xtra.co.nz



IN YOUR GARDEN

Well girls and guys, I hope you've made the most of the holiday time as it's now time to get back into it and give your garden some good old TLC.

Apart from trimming off spent flowers, dead-heading roses and digging out those unsightly summer weeds, that come from nowhere this time of the year, have a good hoe around your flower beds and give a little liquid fertilizer all over.

There's just enough time for another round of annual herbs, sow basil and flat-leaf parsley before autumn. Sow direct, the soil's warm enough to kick start germination in 7-10 days. Sow coriander, radishes, beetroot and baby carrots now too. As from next month, germination and growth rates start to slow dramatically. Sow winter brassicas, including cabbages, cauliflowers, broccoli and brussel sprouts. It's too late to sow parsnips but you can still plant carrots.

Tidy up your tomatoes by taking off the bottom leaves, which tend to have browned off by now, snip off excess top growth too, to encourage your plants to ripen the fruit they have already produced. Feed with liquid fertilizer

Make your own mesclun salad mix. Mix together your favourite salad seeds, e.g. rocket, chicory, cress, kale, chervil, lettuce, spinach, flat-leaf parsley, beetroot and cabbage. Shake the seeds together in a jar, sprinkle thickly in tubs of potting mix or in a trench in your garden. Keep the soil moist and you will have gourmet salad greens within three weeks. Snip with scissors to harvest when they are just a few centimetres tall.

Finally, when the rain does come, feed your lawn and sow autumn grass seed.

Happy gardening, Jennifer



PUBLIC WORKSHOP

Tuesday 1 March 2011

- Have your say in Waikato's future

Come and tell us about your vision for the Waikato district.

Council is reviewing its community outcomes. These form the basis of everything that Council does. That's why it's so important that we hear from you.

The workshop will be hosted by Councillor Rob McGuire, together with Tauwhare and Eureka Community Committees.

A copy of the proposed new outcomes is available on our website
www.waikatodistrict.govt.nz

**When: Tuesday 1 March 2011
7:00pm**

Where: Tauwhare War Memorial Hall

For more information
call the Corporate Planning Analyst
On 0800 492 452



Your Community. Your Future. Your Say



GRAPES



Grapes were one of the first ever fruits to be cultivated and are therefore steeped in history. They are available in many varieties each with its own flavour and character. Most are grown for wine production, grapes for eating are less acidic and have a thinner skin.

Grapes next to apples have been crowned the queen of fruits, they are good for all dyspeptic conditions, febrile conditions, liver and kidney troubles, tuberculosis of the lungs and bones, haemorrhoids, varicose veins, osteomyelitis, gangrene, cancer and a great many other malignant diseases.

Grapes look promising as antiviral, anti-tumor agents because of their high concentration of certain polyphenols, tannins. Two researchers used grapes, added viruses to the grape extract made from the pulp and skins, and it inactivated the viruses. They are also antioxidant.

The fruit also possesses extraordinary high levels caffeic acid, a polyphenol compound with strong powers to prevent cancer in animals. In a recent study, raisins (dried grapes) were linked to lower rates of cancer deaths in a group of elderly Americans.

NUTRIENTS

B vitamins, vitamin C, iron, potassium, selenium, zinc, anthocyanins, flavones, quercetin, fibre.

We have a fantastic crop of very sweet grapes this year, so what we do not eat I will be putting in the deep freeze for use over the winter. Last year they were so bitter that we spat them out, so obviously the weather has a big impact on the flavour and size of the crop.

"LET OUR FOOD BE OUR MEDICINE
AND OUR MEDICINE BE OUR FOOD"

CHERYL MCFARLANE



Consulting Officer Comment



This month's Consulting Officer Comment is going to be a bit of a ramble as there are a number of things to comment on. Firstly the **RAIN**. At last some summer growth and the prospect of a great milk price! The stars are lining up for once.

My challenge to farmers at discussion groups lately has been to ensure they put this **great opportunity into maximum profit**. Note I didn't just mean maximum production. They aren't necessarily the same. I have seen far too many during February with plenty of 'grass' still feeding supplement such as PKE and even some maize silage. Wherever possible keep this until you really need it and use the grass while you've got it. This is a good example of profit thinking and not just production.

The plentiful rain and warm temperatures has seen **Facial Eczema spore counts rise dramatically** since early February. Really be on the ball on this one as traditionally the worst months for Facial Eczema threat are still to come (March to May). When counts rise to high levels, relying on only one method of getting zinc into stock is usually insufficient. Consult with your animal health professional.

On Feb 23rd we held the first of 3 field days, during this year, on the Reynolds Pasture Improvement Focus Farm on Holland Road. This is an initiative of local farmers and DairyNZ with the help of Industry partners to provide a focused forum on pasture persistence and improvement where consistent industry agreed messages are discussed. Let's face it, 80% to 90% of the key messages about pasture improvement are now agreed by everyone so let's make those available to you as farmers to reduce some of the confusion that's out there and leave the rest for discussion elsewhere.

You're feeding your cows really well and yet they're only producing 1.1 to 1.3 kg MS/day. Ever wondered why they aren't doing better? There are probably several reasons right now. Among the most likely is the state of many of the pastures (lots of summer grass, paspalum and weeds) means pasture quality is lower than spring (ME is often only 10 – 10.5 compared to 11.0 – 12 in spring). ME has a huge effect on milk production and appetite. Flies and heat are two other factors that are not conducive to cows eating.

There is a **Body Condition Score (BCS) Workshop** at Richard Henderson's farm on Henderson Rd, Horsham Downs on 17th March starting at 10:45. This will have something for both learners wanting to get well grounded in assessing BCS of cows but for those in management there will be a new angle as Rodger Douglas talks about some really interesting new work on the value proposition of different ways of getting to the Target BCS. They've looked at 6 different ways of managing BCS in autumn with the most profitable adding \$270/ha to a farms operating profit.

Next Eureka DG is on March 8th at Richard Lansdaals, Motumaoho Station Rd, S/N 72577 about 1km before the railway line before Morrinsville.

Phil Irvine
DairyNZ Consulting Officer
027 4839820



Facial Eczema

FE is a threat especially as the soil temperatures get above 13°C and the humidity increases. This encourages the fungus (which causes FE) to grow in the litter found at the base of pastures.

The fungi produce spores which contain the deadly toxin. When the spores are ingested by ruminants, the toxin is released into the digestive tract and then into the blood stream. It is removed by the liver and excreted into the biliary system where it is concentrated and causes severe damage to the biliary duct system. This leads to a state of photosensitisation. Other clinical signs can include diarrhoea, a sudden drop in milk production, restlessness, seeking shade, jaundice, red urine and of course the sunburn effect on non-pigmented skin.

Treating water troughs with zinc **does not** protect calves and sheep from the ravages of FE as they don't drink enough water for the zinc to reach therapeutic levels. **Time Capsule** or **Faceguard** bullets and weekly or fortnightly drenching with zinc oxide are the only way sheep and calves can be effectively protected. If you would like to be kept updated with actual spore counts leave your email address at the clinic and we'll send you the lab reports every week.

Facial Eczema Points

- ◊ If you suddenly introduce cows to high levels of zinc to protect from FE you may occasionally have a few going down with milk fever.
- ◊ If cows have access to non-organic copper while the FE spores are about, the presence of copper seems to make the poison of the spores even more poisonous. You lose some of the protective effects of the zinc.
- ◊ At these high levels of zinc intake the normal uptake of copper from the pasture is seriously restricted and the copper levels of the livers of these animals falls to low levels.
- ◊ In the months before a calf, lamb or kid is born, the liver copper stores are used to make sure the copper stores of the calf are good at birth. There is no copper in milk which is all the newborn normally has and copper is an essential element of life. This is the reason we place so much emphasis on getting your cattle's liver copper levels good before they start calving, lambing or kidding. This is particularly important if you have had to treat your cattle for sometime with zinc.
- ◊ The cows don't live off their calf's liver while it is in the womb.
- ◊ In 30 years of veterinary practice I have never been able to prove a cow dying suddenly in spring is because it no longer has a good functioning liver. Look to another reason for a sudden death of a cow in the spring.
- ◊ This is not true for sheep who suffer far more from the effects of FE and certainly do die from a failed liver sometime after the FE event.



INTRODUCING FEB NZ LTD

Stop That Leak!



Owned and operated by long-time Eureka residents Debbie and Weng Yew Ng, Feb NZ Ltd supplies the trades and D.I.Y market with STOPLEAKS Aquaseal Hyband, the leak repair kit in a roll.

A fast, affordable and easy to use solution to a wide range of leaks, Aquaseal Hyband can be used for repair and protection of roofs, hay barns, covered yards, woolsheds, and packing sheds. It can also be used for sealing leaks in cars, vans, trucks and caravans. It has a multitude of applications, and has even been used to make temporary repairs to a pair of fishing waders, a kayak, an air mattress and a cracked Walkato gumboot!



Feb Concrete Solutions for Your Home and Garden Projects



Feb NZ Ltd also supplies Feb Waterproofers/Sealers, Bonding Agents, Adhesives, Dustproofers and Colouring Pigments to the building and concrete trades, and for D.I.Y home and landscaping projects. Whether it be concrete waterproofing or sealing, tiling (interior and exterior) concrete repair, dustproofing the garage floor, creating a decorative concrete finish, or many other projects in the home and garden, Feb NZ Ltd can provide you with the right Feb Product for your job.



We have enclosed a brochure in the Eureka Express, which gives more information about our range of Feb Products, or you can go to www.stopleaksnz.co.nz or www.febnz.co.nz. Debbie can be contacted for enquiries on 027 247 9367

THE BEAUTY HOUSE

Personalised, friendly service

Jacqueline Jones

Beautician

Tauwhare Village, 1092b Tauwhare Road

Ph: 8240950 or 0274 853985 Email: thebeautyhouse@xtra.co.nz



DERMATECH, OASIS BEAUTY & SKIN DEEP (Beautiful NZ made skincare) - 40 min FACIALS ALL \$40 or pay only \$25 for your first Glycolic Peel – a MUST HAVE!!

EYELASH PERMING – Perm & Lash tint only \$30!!!

SUNFX SPRAY TANS ONLY \$30 Or bring a friend and you both pay only \$25!!

BELLA VI MINERAL COSMETICS – Spend \$100 or more in Mar/April and receive either a lash or brow tint. (Value \$15) 4 beautiful new eye shadows available, plus a new coloured lip-gloss, concealer and foundation.

OASIS DAILY SUN SPF30+ – is a great family sunscreen without the nasty chemicals. Paraben and PABA free, great for children with eczema and sensitive skin. Non greasy, non whitening. UVB/UVA protection and made in NZ! 250mls - \$39.90

RHINO REPAIR - another great natural & organic product to soothe tender skin and assist in the healing process. Very popular for eczema/dermatitis sufferers both young and old, this can be used on face and body, and is perfect also for nappy rash, cracked heels, sunburn, dry chapped skin and more!
100g - \$32.50 250g - \$65.00

GIFT VOUCHERS AVAILABLE & A LOVELY SELECTION OF REASONABLY PRICED GIFTS

Eureka Precast Concrete

117 Hooper Road

**Manufacturer of the following
Farm and Small Block Concrete Products**

Palm Kernel Feeding Troughs

Feeding Pad Troughs

1,000 Litre Oblong Water Troughs

200 Litre Round Water Troughs

Offal Hole Lids

Septic Tank Replacement Lids

Plus Much More

Ph. Ian Manning – 0274 961902

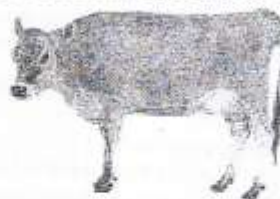
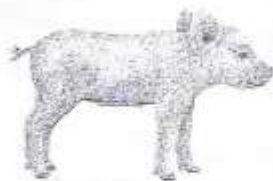
824 1988 a.h.

JBVisserVets

The team of **JBVisserVets** pride themselves on providing you top quality care for all large animals. Be it dairy, beef or lifestyle, your animals are in the best of care. Customer focused to the highest of quality, **JBVisserVets** look forward to meeting you today.

0800 VISSER

47 Lorne St Morrinsville / 161 Morrinsville Road Newstead



**JBVISSER
VETS**

07 889 0414

INNOVATIVE



870 SH 26 Newstead
 Brent 0272 432 011
 mcfarlanes@farmside.co.nz

- Hay / Haylage—round, square, conventional
- Grass & Maize Silage
- Full ground cultivation
- Maize and Crop Planting
- Land lease & Share Cropping
- Spraying
- Truck & Trailer Hire
- Digger
- Metal injected sub-soil irrigation

Ph 824 1186
 Brent 0272 432 011



"Helping farmers feed their cows"



Ctas NZ Ltd

www.ctas.co.nz



Specialists in:

- Professional systems online and PC development
- Online internet based and PC/Lan Systems development
- Business Websites – FREE development (conditions apply)
 Check out <http://ctas.co.nz/Webs/Home.aspx> to see more.
- Alert-Me - Online TXT and Email reminder system. Ideal for everything, from birthdays, appointments, sporting, gardening, TAX, WOF, Registration and many more. One off or recurring. Free for home use. Go to www.Alert-Me.co.nz
- YouTXT – Operate your own TXT shortcode using our TXT system for free. Go to www.youtxt.co.nz
- FlightCheck – Check your Flight details, real time from your Mobile Phone. TXT Flight number to 8908. Txt's cost 50c

Phone: 07 824 1025
 Email: grant@ctas.co.nz








Newstead Veterinary Services
 161 Morrinsville Rd (SH26)
 Phone (07) 856-4522 Fax (07) 8569487
 email: admin@newsteadvets.co.nz
www.newsteadvets.co.nz

We offer a comprehensive range of services for dogs, cats and small pets.

- Puppy pre-school classes
- Comprehensive range of pet care products and pet food
- Nutritional advice with onsite pet dietician and free weight clinic
- Cremation with a local pet crematorium, with optional return of ashes
- Isolation ward
- NZVA Microchipping Accredited Practice
- MAF Accredited vets for pet export certificates to Australia
- Ample parking

We believe that pets are important members of your family.

SPYVES PANEL SHOP
for all
Panel and paint requirements



**AUTOBOT CHASSIS
and
ALIGNMENT MACHINE**

Ph Ron or Karen 8241 890
Fax 8241 892
Mob 027 280 0346

ROSS PUMPS

&
Filtration Specialists Ltd



Servicing and installation
On all types of pumps
Full Water Treatment
Service Available

DAREN ROSS

Tel. 8241 726 or 0274 346 571
Fax. 8241 879
Email: rosspumps@xtra.co.nz

COMPUTERISED BULK SPREADERS LTD

For all your spreading needs



FERTILIZER, LIME, UREA

**Top Service,
Competitive Rates**

**Roger Springett
103 Hooper Road Eureka
Ph. 8241 175
Mob. 0274 970 413**

EUREKA POULTRY FARM

13 Hooper Road
Ph 824 1762

**NIC & MARIA STOLWYK
Hobby Hens**



Young pullets from
5 weeks to point-of-lay
Great for lifestylers
Bagged up chook manure
Hours Mon-Sat 8-6

Green Acres

Professional lawn and
Garden care service



Maurice Smith

For free no-obligation quote:
Ph: (07) 824 1948
Mobile: 0274 797 282
Fax: (07) 824 1947
Email: msmith@clear.net.nz
Ride-on mowing specialists
Give your lawn the perfect finish

**IAN MANNING
REGISTERED DRAINLAYER**



**For all drainlaying work
New or alterations
Residential & Commercial
Blocked drains cleared
Maintenance
Prompt service**

**Tel. 8241 988
Fax. 8241 989
Mob. 0274 961 902**

Kelvin Lalich Builders Ltd

- New homes
- Alterations
- Large & Small
Commercial Buildings
- Chicken Sheds

Phone 889 3951 (bus)
889 3975 (a/hrs)



**"Building
with Pride"**

**FRESH
APPLES & PEARS
STONEFRUIT IN SEASON**



**NEWSTEAD ORCHARD
552 Morrinsville Road**

OPEN MON-SAT,
W J McMiken & Co
Morrinsville Road
Tel. 856 4478

TAUWHARE HOME KILLS LTD



**Tauwhare Village
Owner Operators
Trevor & Leonie Brunton**

**On Farm Killing Service
All beef hung for 7 days
FREE OFFAL DISPOSAL**

**Ph 824 0580 all hours
Fax 824 0509
Mob 0274 757 315**



Gayle Orr

Spiritual Counsellor & Teacher
Working with angels to relay
Messages from loved ones
Personal Readings
Healing
Spiritual Counselling
Meditation & Relaxation Classes

For a personal reading
phone: 07 824 1713

Do Business Locally and Keep Locals in Business



Local builder
Tauwhare Road resident
Registered Tradesman



Concrete work
New homes
Renovations
Alterations
Farm buildings
Decks
Fences
Bathrooms
Kitchens
Roofing

Over 29 years building experience
No job too big or too small

Craig Griffin Builders Limited
Phone Mobile: 027 279 2682
Phone/Fax After Hours: 824 1607
Email: craigandjackiegriffin@ihug.co.nz

CALF COVERS

"Canvas, Jute, or satin
lined for Calf Club"

I also manufacture horse covers, trailer covers or any other kind of cover you may want. Good quality, P.V.C. horse gear bags — can also be used for dive bags. Good quality at reasonable prices.

Phone Narelle Pollock
824 0736



CAMBRIDGE
CARPET
CLEANING

Servicing the Waikato

Also

- ✓ Upholstery Cleaning and Protection
- ✓ Flood Restoration
- ✓ Stain Treatment
- ✓ Auto and Marine Work
- ✓ Window Cleaning
- ✓ Senior Citizens Rates

Phone Grant on 0275 542 116
Or 07 823 7031

Locally Owned and Operated

nzgardensheds
the best little sheds around

Your local garden shed supplier of
NZ made, self assemble Garden Sheds
(Zincalume or Colour Steel)

GET IN TOUCH...

- * EASY ASSEMBLY
- * MADE TO LAST!

Waikato Shed Company
218 Hunter Road, Eureka,
Hamilton

Phone: 07 824 1045
Email: sales@nzcgardensheds.co.nz

EQUIRE FOR A BROCHURE NOW

Trusler Contract Lawn Mowing

Fast, efficient, reliable



Free, no-obligation quote and
advice

Lex Trusler
Ph: 824 1906 Mob: 027 221 0861
Fax: 824 1907

Lifestyle blocks—sections
Road verges—horse studs
20 yrs + experience

Scanlan & Jones

- Specialists in:
- ✓ Wood Fire Sales
 - ✓ Wood Fire Installation/Repairs
 - ✓ Hearth Manufacturers
 - ✓ Outdoor Fire Installations
 - ✓ Chimney Sweeping
 - ✓ Heat Transfer Kits — Sales & Installation

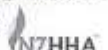
Registered Installers
Over 17 Years Experience
Free Quotes



Contact Justin & Brendon
0274 834 267 (day)

A/Hrs: 07 824 0950 Fax 07 824 0951
Email: scanlan.jones@xtra.co.nz

Member of New Zealand
Heating Association



HAIRFIELDS

HAIR DESIGN
95 HOOPER ROAD
Sharon Laurent

Full salon facility in Eureka
Total hair care professional
with many years experience
Agent for Nutrimetics also



Open Tuesday to Friday
Late nights Tues/Thurs
Tel. 824 1712 or 027 280 5978



EUREKA MOTORS

COLIN DUNCAN (PROP). SH 26, OPPOSITE EUREKA HALL

WE ARE EQUIPPED AND SKILLED TO CARRY OUT ANY REPAIRS NEEDED ON ALL TYPES OF VEHICLES

Our experienced workshop staff guarantee to provide quality service to all our customers

If we don't have the right part in stock we'll get it for you straight away
If you need some work done, why not give us a try?

OPEN MONDAY - FRIDAY 7.30am - 6.00pm

SATURDAY 8.00am - Noon

Ph 8241 773 Fax 8241 073

WALLING CONTRACTING LTD **'YOUR PROVEN LOCAL ONE STOP CONTRACTORS'**

WE CAN OFFER YOU THE FOLLOWING SERVICES:



- *Grass Silage
- *Ploughing
- *Rotary Hoeing
- *Ripping
- *Undersowing
- *Baling & Wrapping
- *Digger (12 Ton)
- *Grass Crop Sales

- *Maize Silage
- *Power Harrowing
- *Discing
- *Maize Planting
- *Roller Drilling
- *Power Harrow/Seedbox
- *Shavings & Sawdust
- *Maize Crop Sales



FOR ALL YOUR CONTRACTING NEEDS
PHONE LEN OR BECKY
ON

824 0894 (anytime)